

SAFETY  
PRECAUTION FOR  
WORKING IN  
CONFINED  
SPACES

Kingdom of Saudi Arabia

Ministry of Water & Electricity

General Administration  
of industrial Security

بِسْمِ اللَّهِ الرَّحْمَنِ الرَّحِيمِ



المملكة العربية السعودية

وزارة المياه والكهرباء

الإدارة العامة للأمن الصناعي

:

:

:

:

:

:

:

:

:

:

:

:

:

:

:

Kingdom of Saudi Arabia

Ministry of Water & Electricity  
General Administration  
of industrial Security

بِسْمِ اللَّهِ الرَّحْمَنِ الرَّحِيمِ



المملكة العربية السعودية  
وزارة المياه والكهرباء  
الإدارة العامة للأمن الصناعي

:  
:  
:  
:  
:  
:



(

(

(

(

(OSHA)

(NIOSH)

-:

(

(

(

-:

"

"

(

(

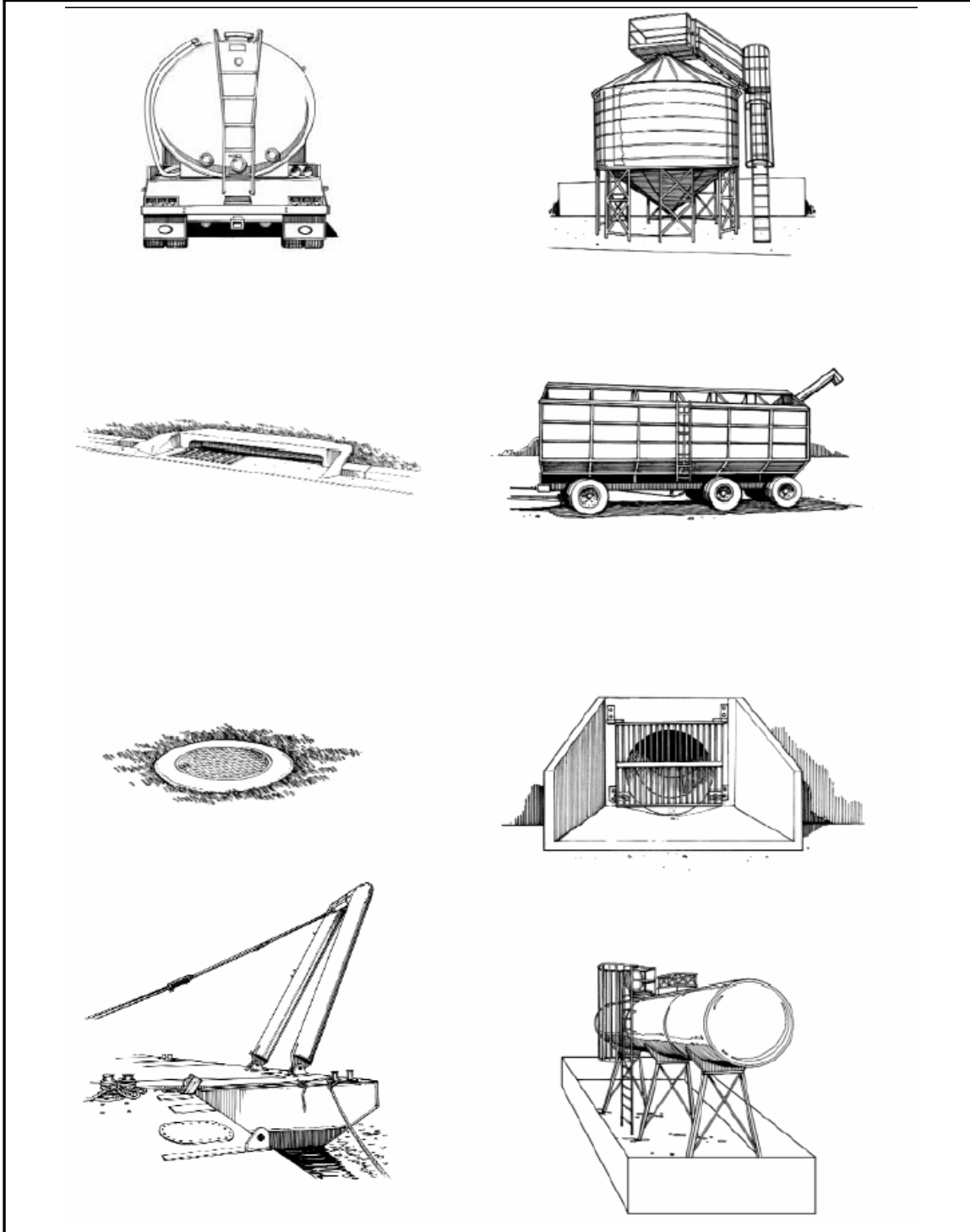
(

(

(

(

(





(

-:

(

( )

(

(

(

(

-:

❖

❖

❖

❖

❖

❖

❖

❖

( :

-:

-:

-:

-:

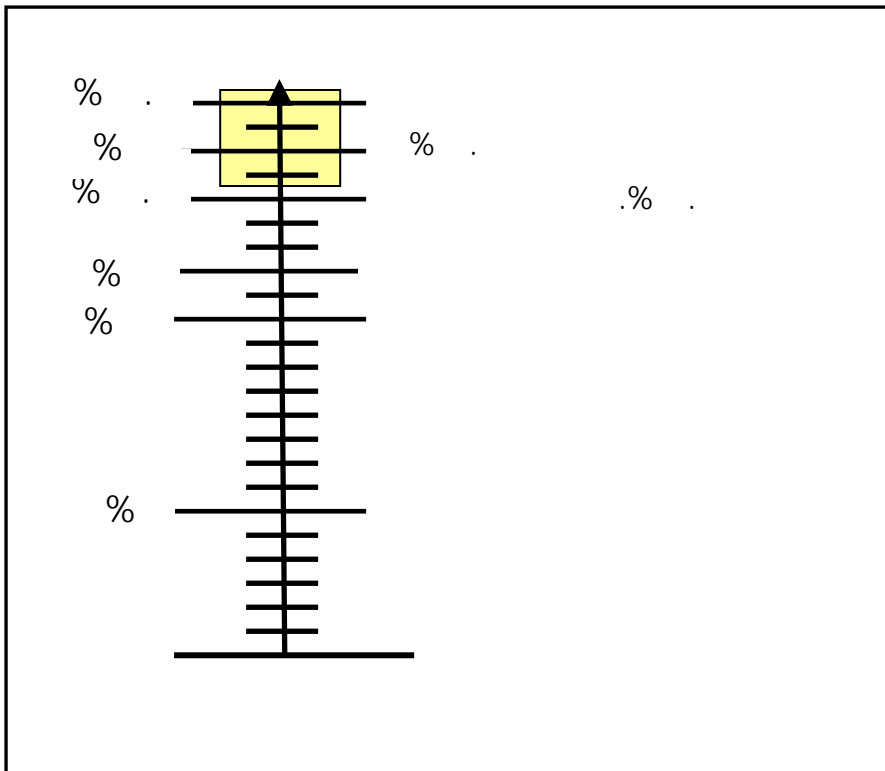


-:

(% ) ( % )

(% . ) ( % . )

(% )



:



(Hydrogen Sulfide (H<sub>2</sub>S))



<b>OSHA PEL</b> (Permissible Exposure Limit) Occupational Safety and Health Administration.	20 ppm
<b>NIOSH REL</b> (Recommended Exposure Limit) National Institute for Occupational Safety and Health.	10 ppm 10 mintues
<b>ACGIH (TLV-TWA)</b> (Threshold Limit Value – Time Weighted Average) American Conference of Governmental Industrial Hygienists	10 ppm
<b>ACGIH (TLV-STEL)</b> (Threshold Limit Value – Short-Term Exposure Limit) American Conference of Governmental Industrial Hygienists.	15 ppm
<b>IDLH</b> (Immediately Dangerous to Life and Health).	100 ppm



(Carbon monoxide (CO))

(

-:



:

<b>OSHA PEL</b> (Permissible Exposure Limit) Occupational Safety and Health Administration.	50 ppm
<b>NIOSH REL</b> (Recommended Exposure Limit) National Institute for Occupational Safety and Health.	35 ppm 10 mintues
<b>ACGIH (TLV-TWA)</b> (Threshold Limit Value – Time Weighted Average) American Conference of Governmental Industrial Hygienists	25 ppm
<b>IDLH</b> (Immediately Dangerous to Life and Health).	1200 ppm

:



-:

-:

( )

(

( )

(

(

(Methane (CH4))



(Lower Explosive Limit(LEL))

(Upper Explosive Limit (UEL))

(% )

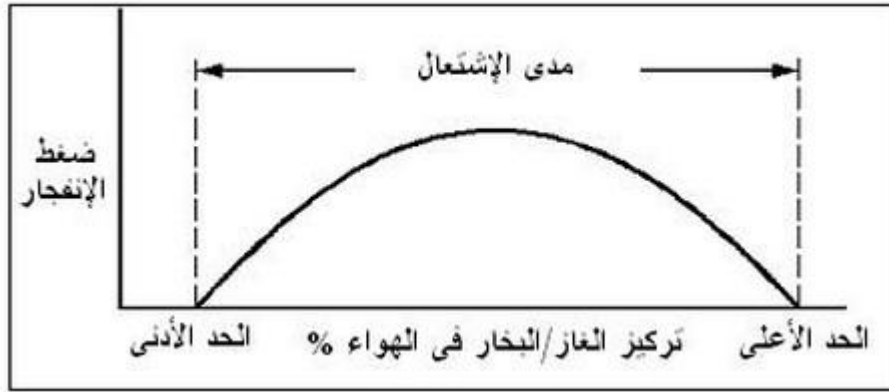
(% )

(% )

(% )



UEL	LEL		
%	%		
%	%		
%	%		



( :

( :

( :

Kingdom of Saudi Arabia

Ministry of Water & Electricity

General Administration  
of industrial Security

بِسْمِ اللَّهِ الرَّحْمَنِ الرَّحِيمِ



المملكة العربية السعودية

وزارة المياه والكهرباء

الإدارة العامة للأمن الصناعي

( :

○

○

○

○

○

○

○

( :

( :

( :



(

-:

Elimination ( ) -: ( :

-:

(

(

Substitution ( ) -: ( :

-:

(

(

(

(Isolation) -: ( :

( )

( )

-:

( ...

)

(

(

(

(

)

(

.(



-:

(

( :

(

(

(

(

(

(

(

(

(

(

(

(

(



(

(

(

-:

( :

. ( - . )

%

%

(

(

(



-:

( :

:(Standby Worker)

( :

(

(

(

(

(

(

(

(

:

( :

(

(

(

(

Kingdom of Saudi Arabia

Ministry of Water & Electricity  
General Administration  
of industrial Security

بِسْمِ اللَّهِ الرَّحْمَنِ الرَّحِيمِ



المملكة العربية السعودية  
وزارة المياه والكهرباء  
الإدارة العامة للأمن الصناعي

\_\_\_\_\_ (

(

:

(

(

(

(

(





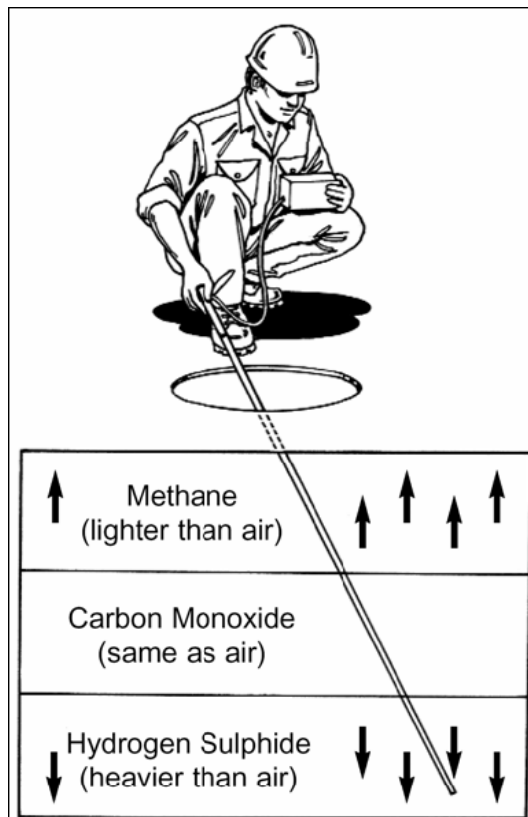
(

(

(

(

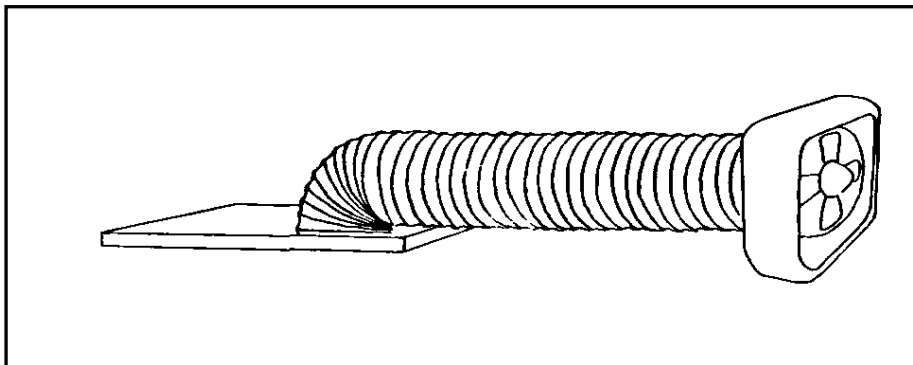
( )





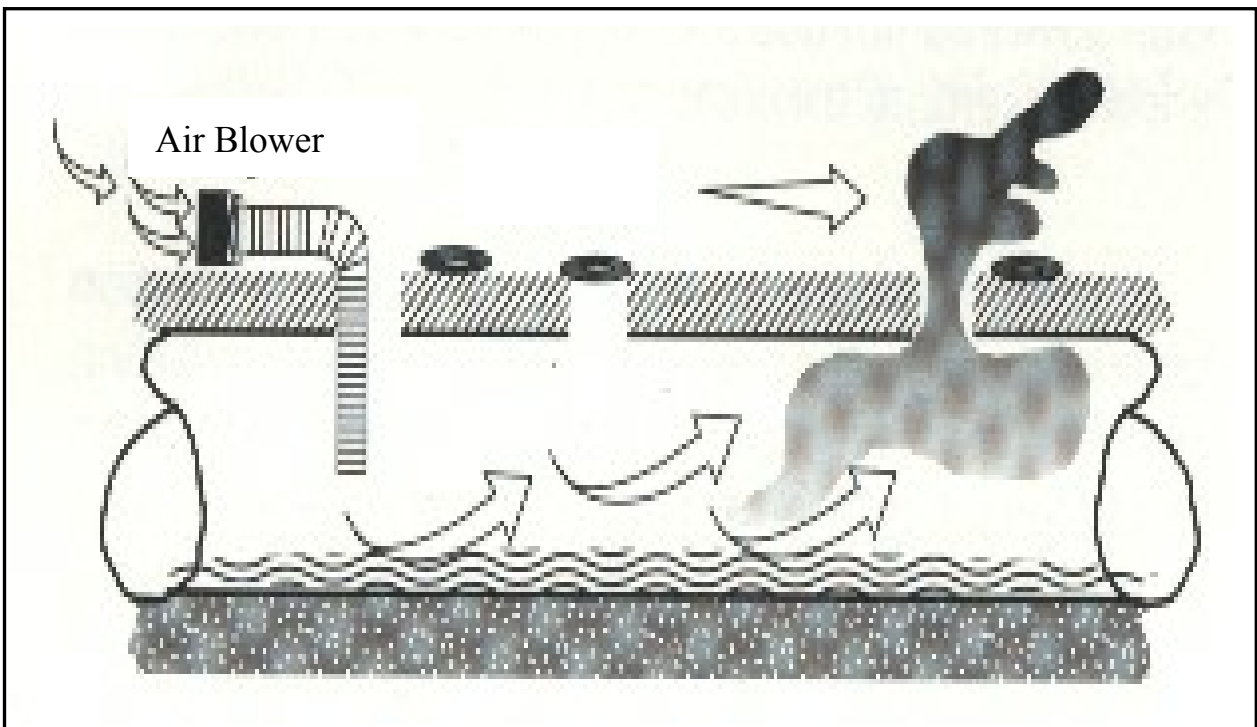
(

( )



(AIR BLOWER)

:



Air Blower

:



(

-:

✓

✓

✓

✓

✓

✓

✓

✓

( )

✓

✓

✓

( )

✓

✓

✓

-:

❖

❖

❖

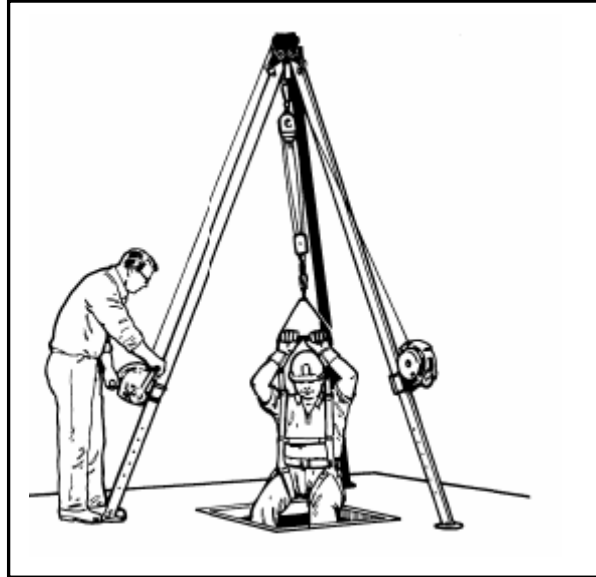
-: \_\_\_\_\_



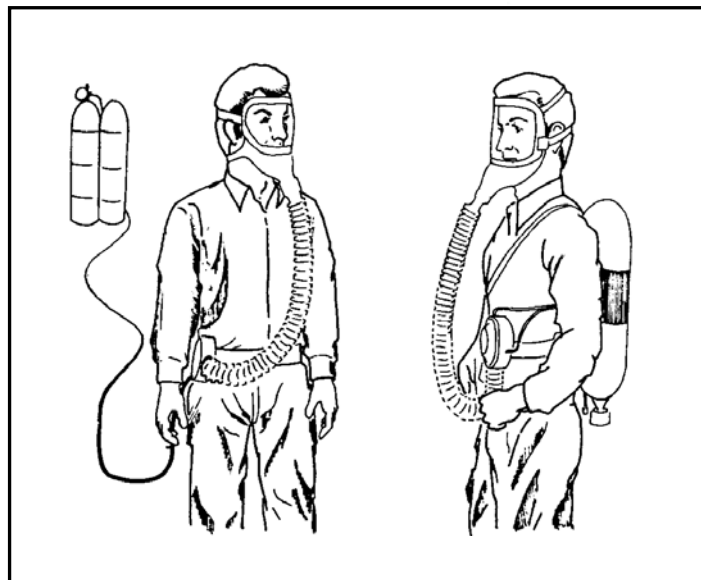


(

:(



( ) :



SCBA :

Kingdom of Saudi Arabia

Ministry of Water & Electricity

General Administration  
of industrial Security

بِسْمِ اللَّهِ الرَّحْمَنِ الرَّحِيمِ



المملكة العربية السعودية

وزارة المياه والكهرباء

الإدارة العامة للأمن الصناعي

// /

( )

(

(

NIOSH Pocket Guide to chemical Hazards

OSHA Regulations Standard 29 CFR

NIOSH Guide to Safety in Confined Spaces

